



## 63<sup>rd</sup> AutoZone Liberty Bowl



### GAMEDAY INFORMATION

Mississippi State Bulldogs vs. Texas Tech Red Raiders

Tuesday, December 28<sup>th</sup>, 2021

#### Schedule

- Stadium Parking Lots open at 10:00am
- Pre-Game Buffet opens at 2:30pm
- Media Entrance opens at 3:45pm
- Stadium Gates open at 4:00pm
- Pre-Game Show starts at 5:15pm
- Kick-Off is at 5:45pm

#### Seating Locations

- Texas Tech sections located on WEST SIDE of Stadium: enter at Gates 2, 3 & 4
- Miss State sections located on EAST SIDE of Stadium: enter at Gates 1, 5 & 6

#### Ticket and Will Call Locations

- Ticket Sales/Will Call opens at 9:00am in the Stadium Office
- Ticket Sales/Will Call will switch to Stadium Gate 1 at 12pm
- General AutoZone Liberty Bowl Will Call is located at the Gate 1 Ticket Office
- Texas Tech Will Call/Player-Guest Pick-up is located at the Gate 4 Ticket Office
- Miss State Will Call/Player-Guest Pick-up is located at the Gate 6 Ticket Office

#### Health & Safety

- Masks are strongly encouraged in all areas of the Stadium, but NOT REQUIRED
- Stadium's Clear Bag Policy will be enforced

#### Stadium Parking Lots

- All Stadium parking lots open on Game Day at 10:00am
- Please see map and check back of parking pass for Access Point Entry for Pass Lots
- Parking Pass Holders are reminded to have their passes displayed on their dash board/hung from rear view mirror prior to arrival at the Stadium parking lots
- ADA Lot is first come, first serve to patrons with ADA placard. Please show upon entry.
- General Parking (CASH ONLY) will be available in the following lots:
  - Tiger Lane (\$50) with dedicated tailgating space and power services: enter at Access 9 (East Parkway and Tiger Lane South)
  - Blue Lot 11 and Blue Lot 14 (\$20/\$80 for RVs): enter at Access 7 (Central Ave. and Early Maxwell)
  - Tan Lot (\$20/\$80 for RVs/Buses): enter at Access 11 (Southern Ave. and Early Maxwell)

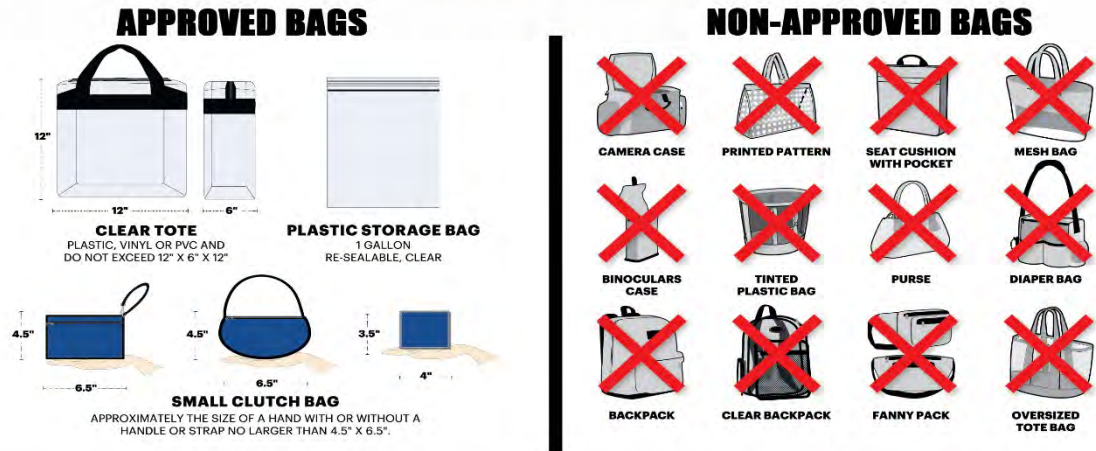
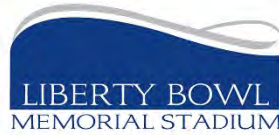
### Park-N-Ride Shuttles

- The City of Memphis is offering Park-N-Ride Shuttle Service to the Stadium from the University of Memphis campus. The service includes free parking and round-trip shuttle service to and from the stadium for \$5 per person. Shuttles are cash only.
- Fans interested in shuttle service can park in the University's Central Avenue parking lot (3700 Central Avenue, between the Holiday Inn parking lot and the Scheidt School of Music) and access the shuttles, which will begin at 1:30 p.m. and run continuous routes until one hour after the game concludes.
- Drop-off and Pick-up location at the Stadium will be located at the Coca-Plant Office at 499 S. Hollywood)

### Off-Site Parking Locations

- Coca-Cola Lot, entrance on S. Hollywood Street just north of Southern Avenue
  - Opens at 10am, Tailgating NOT permitted
  - \$20 cash-only, per space
  - RVs and Buses are permitted, must pay per space used
- Tobey Park, entrances on Central Avenue and S. Hollywood Street
  - Opens at 10am, Tailgating permitted
  - \$15 cash-only, per space
  - RVs and Buses are NOT permitted
- Christian Brothers University, lot entrance at Central Ave. and Early Maxwell.
  - Opens at 11:00am, Tailgating permitted
  - \$20 cash-only, per space
  - RVs and Buses are NOT permitted
- Fairview Complex (Maxine Smith Steam Academy & Middle College School), lot entrances on Central between East Parkway and Early Maxwell
  - Opens at 12:00pm, Tailgating NOT permitted
  - \$20 cash-only, per space
  - RVs and Buses are NOT permitted
- Shelby County School Board, lot entrance at 160 South Hollywood St
  - Opens at 8:00am, Tailgating NOT permitted
  - \$20 cash-only, per space
  - RVs and Buses are NOT permitted

LIBERTY BOWL  
MEMORIAL STADIUM  
**CLEAR BAG POLICY**



To provide a safer environment for the public and significantly expedite guest entry into the stadium, Liberty Bowl Memorial Stadium will implement a new bag policy in 2017-18 for **all ticketed Stadium events** that limits the size and type of bags that may be brought into the venue.

**Guests will be able to carry the following style and size bag, package or container into the venue:**

- Bags that are clear plastic, vinyl or PVC and do not exceed 12" x 6" x 12."
- One-gallon clear plastic freezer bag (Ziploc bag or similar).
- Small clutch bags, approximately the size of a hand, with or without a handle or strap can be taken into the venue with one of the clear plastic bags.
- An exception will be made for medically necessary items after proper inspection.

Prohibited bags include, but are not limited to: purses larger than a clutch bag, briefcases, backpacks, fanny packs, cinch bags, luggage of any kind, non-approved seat cushions or seatbacks \* (see below) computer bags, diaper bags, binocular cases, and camera bags.

Guests will continue to be able to enjoy their tailgate activities in the parking lots and to do so with greater safety and the knowledge that their entry into the venue will be smoother and faster. They also will continue to be able to carry items allowed into the venue, such as binoculars, cameras, and smart phones.

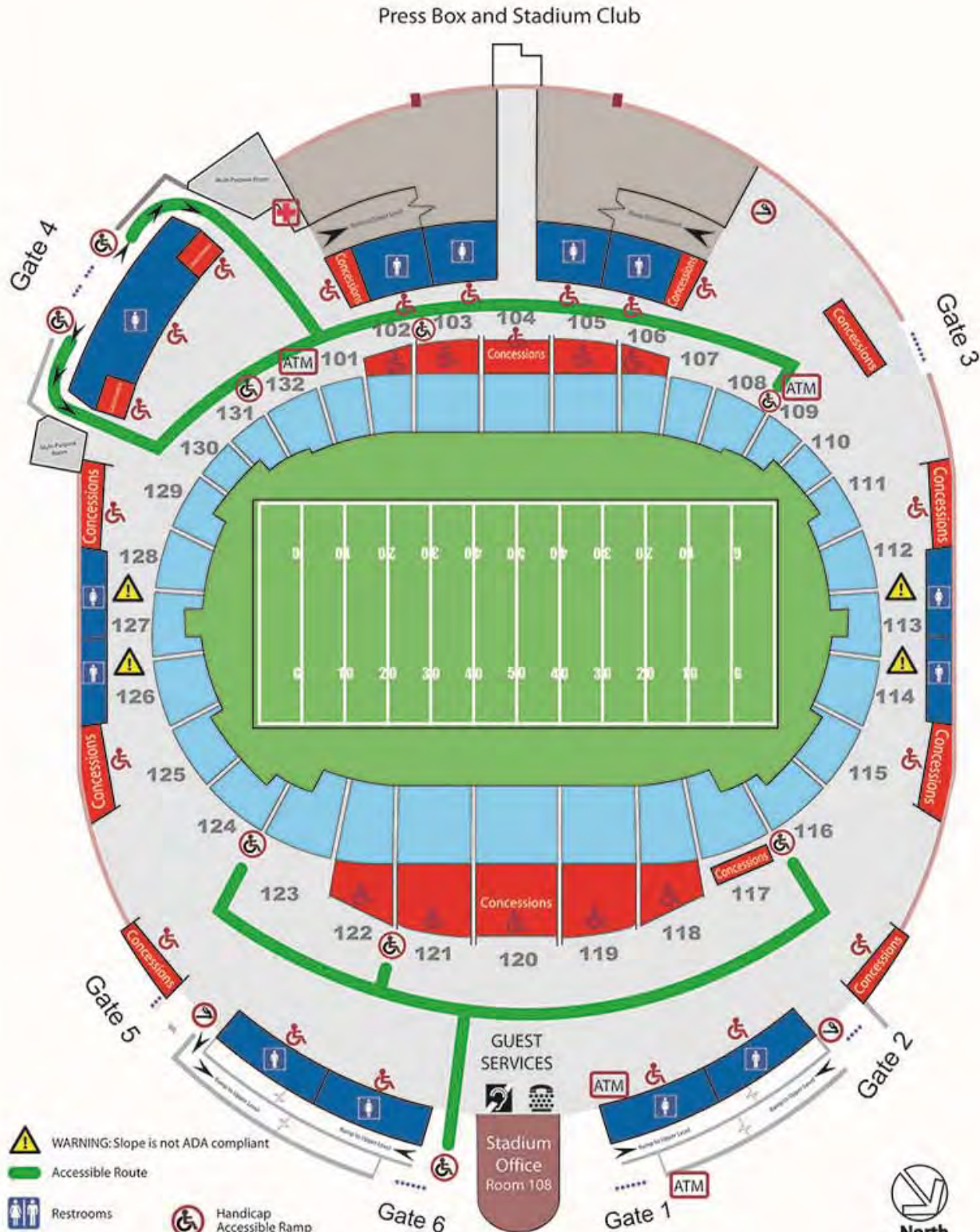
*\*Non-approved seat cushions and seatbacks include large traditional seat cushions that have pockets, zippers, compartments, or covers. Seat cushions and seatbacks must be 18" or less in width with no armrests.*

# SECTION MAP



## Liberty Bowl Memorial Stadium

# CIRCULATION MAP

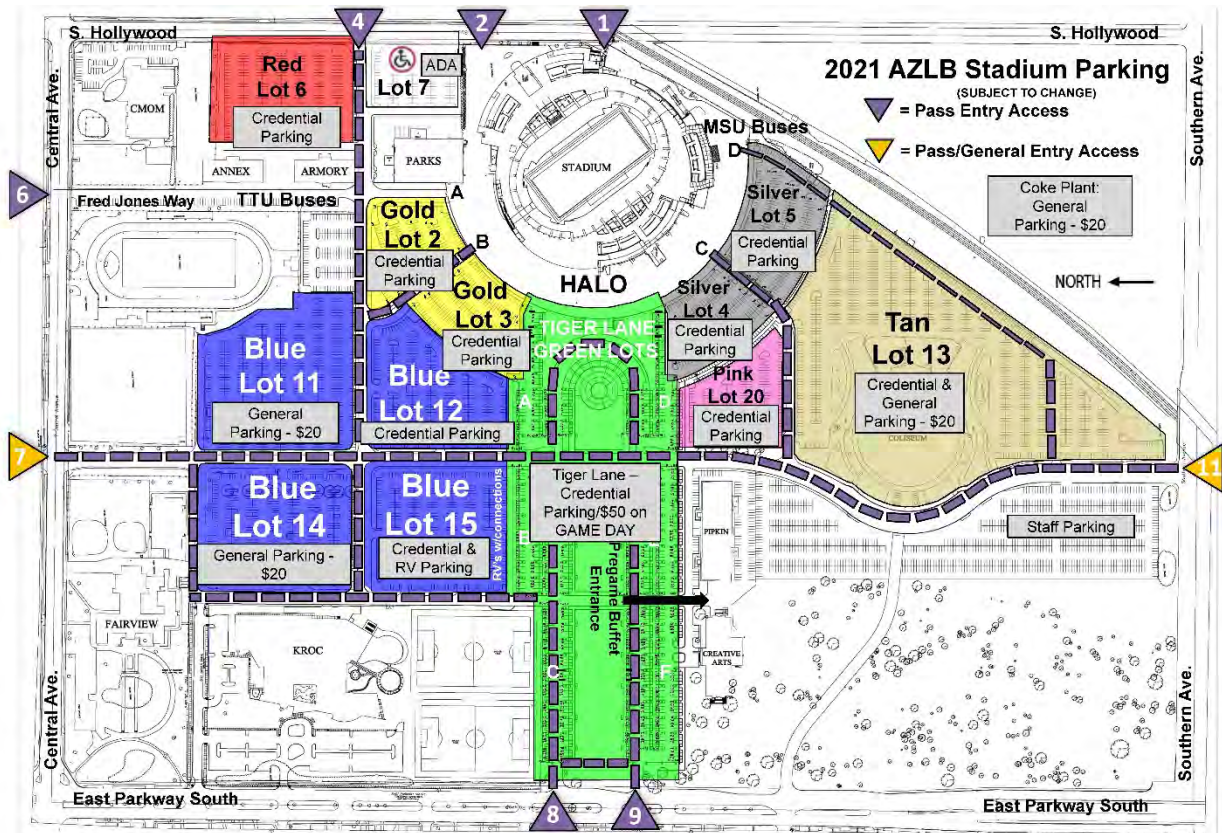


- WARNING: Slope is not ADA compliant
- Accessible Route
- Restrooms
- Handicap Accessible Ramp
- First Aid Station
- Automated Teller Machine
- Designated Smoking Areas
- Handicap Accessible Facility
- Assistive Listening Systems
- Telecommunications Device for the Deaf (TDD)

Stadium Office and Sky Boxes

## Liberty Bowl Memorial Stadium

# STADIUM PARKING MAP



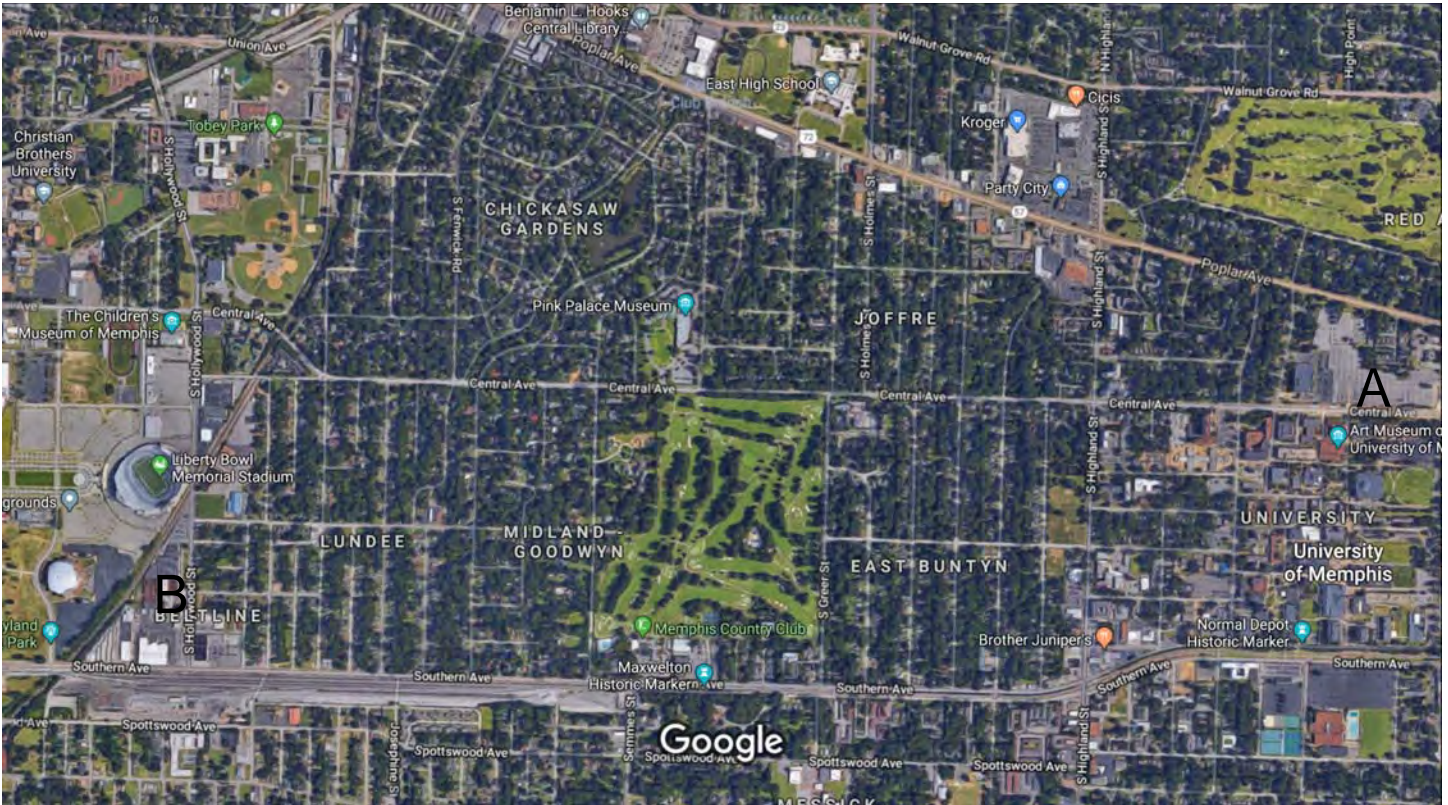
**ALL LOTS OPEN AT 10AM ON DECEMBER 28, 2021**

## Entry Points

- Red, Gold and ADA Lots best to use Access 4 on Hollywood
- Blue and RV Lots best to use Access 7 on Central
- Tiger Lane best to use Access 8 or 9 on East Parkway
- Pink, Silver and Tan Lots best to use Access 11 on Southern Avenue
- Credential/Parking Pass Holders PLEASE look at the back of your pass!

## General Parking Sales

- Cash Only
- Enter at Access 7 (Central & Early Maxwell) or Access 11 (Southern & Early Maxwell)
- \$50 for Tiger Lane
- \$20 for Blue Lot 11, Blue Lot 14 and Tan Lot
- RVs and Buses are \$80



1000 ft

**PARK-N-RIDE SHUTTLE SERVICE**

*Shuttles would depart UofM and travel Central Ave. to Goodwyn, Goodwyn to Midland, and Midland to S. Hollywood St.*

**A: UofM Central Lot & Connely Lots**

**B: Coca-Cola Bottling Plant/Drop-off & Pick-Up Location**



## OFF CAMPUS LOT LOCATIONS

A: Coca-Cola Plant

B: Tobey Park

C: Shelby County School Board

D: CBU

E: Maxine Smith STEAM Academy